



Sadakathullah Appa College

*An Autonomous Institution, Re-Accredited by NAAC at an 'A' Grade, *ISO 9001 : 2015 Certified*

AQAR

(2020-2021)

CRITERION VII

INSTITUTIONAL VALUES AND BEST PRACTICES

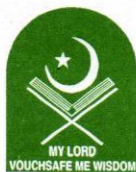
7.1.2 FACILITIES FOR ALTERNATE SOURCE OF ENERGY

SOLAR ENERGY

Submitted to

THE NATIONAL ASSESSMENT AND ACCREDITATION COUNCIL (NAAC)





Sadakathullah Appa College

*An Autonomous Institution, Re-Accredited by NAAC at an 'A' Grade, * ISO 9001: 2015 Certified *

7.1.2

The Institution has facilities for alternate sources of energy and energy conservation measures

Solar Energy

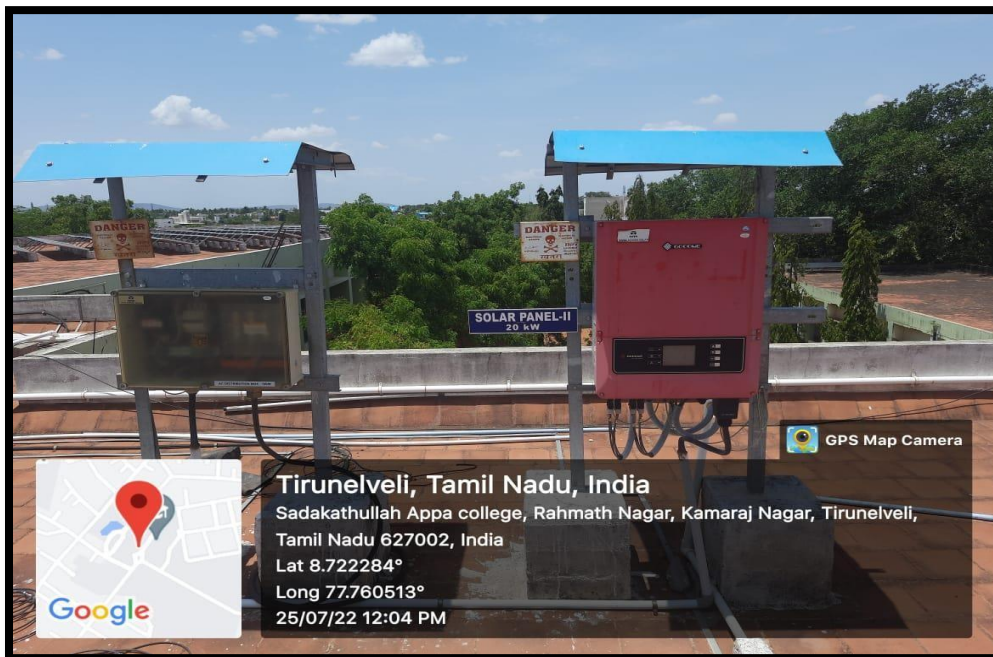
Sadakathullah Appa College has facilities for alternate sources of energy and energy conservation measures. It is taking steps to be self-reliant in the matter of power as three 20 kW roof-top solar power-generating panels, amounting to 60 kW, have been installed on the premises.



Solar Panel-I



Solar Panel-II



Solar Panel-III



Solar Panel Purchase order

GOVERNMENT OF TAMILNADU
ELECTRICAL INSPECTORATE

13 SEP 2019

Phone & Fax : 0462 2530343

e-mail : eitin@tn.gov.in
Visit : www.tnei.tn.gov.in

From
The Electrical Inspector,
B21/2, N.G.O. 'B' Colony,
Jawahar Nagar,
Tirunelveli - 627 007.

To
M/s.Sadakathullah Appa College,
Rahmath Nagar, Tirunelveli - 627 011.

Letter No. 2561A/EI/TIN/Reg 32/Solar/2019 Dated : 10-09-2019

Sirs,

Sub : Electricity - Solar PV Power Plant installations - Voltages upto and inclusive of 650V at the premises of M/s.Sadakathullah Appa College, Rahmath Nagar, Tirunelveli - 627 011. EB Service Connection No. 011-018-1184 - Inspection under Regulation 32 of Central Electricity Authority (Measures relating to Safety and Electric Supply) Regulations, 2010 - Inspected on 05.09.2019 - Permission to Commission the 20kW Solar PV Power Plant Equipments - Regarding..

Ref : Your Letter No. Nil. Dated: Nil (Recd. on 05.09.2019).

Under Regulation 32 of Central Electricity Authority (Measures relating to Safety and Electric Supply) Regulations, 2010, permission is hereby accorded to commission the 20kW Solar PV Power Plant as per the

	Solar PV Modules	Solar PV Grid Tied Inverter
Make	Tata Power Solar	GOODWE
Type / Model	--	SI.No. 9020KDTU187R0051
Capacity	320W-64Nos.	20kW, 490V

CONDITIONS

Subject to the following Conditions:

- 1) Reverse power relay protection should always be ensured for the TANGEDCO supply of the above Electrical Installation.
- 2) The permission granted now ceases to be valid when the Solar set / Diesel Generator set is shifted from the above service connection.
- 3) The date of commissioning of the Solar set should be intimated to this office. The Superintending Engineer, Tirunelveli Electricity Distribution Circle / TANGEDCO, Tirunelveli, The Executive Engineer O&M, Tirunelveli (Urban), TANGEDCO and Chief Electrical Inspector to Government, Chennai-32.
- 4) Tax on Consumption or Sale of Electricity using Solar & DG supply should be remitted monthly and returns sent to this office as per Tamil Nadu Tax on Consumption or Sale of Electricity Act.2003.

Committed
05.09.2019
Electrical Inspector (i/c)
Tirunelveli

Copy to: Thiru.Seeni Energy Engineers, 57, Palaya Gramam Street, Cheranmahadevi, Tirunelveli - 627 414.
Copy to: The Superintending Engineer/ TANGEDCO LTD.,
Tirunelveli Electricity Distribution Circle, Tirunelveli
Copy submitted to: The Chief Electrical Inspector to Govt., Chennai.

12/9/19

Tata Power Solar Authorised Dealer
No.71/1B, Pallavan Nagar Main Road, Maduravoyal, Chennai 600095
Cell : 9445249906 / 9444680137 Email : srinivasimpex@ymail.com GSTIN 33AFCPT0278G1Z1

No.SI/TPS/2018-19/110

27.02.2019

PROFORMA INVOICE

To

Mr.T.E.S.Fathu Rabbani
Secretary
Sadakathullah Appa College
Tirunelveli 627011

Dear sir,

We wish to draw your kind attention to our discussion on the subject and as per your request we are giving hereunder the quote for Tata Power Solar

Tata Dynamo G 20 kw 3 phase – Plant cost	10,60,000	
(Solar panels, Inverter, ACDB, AJB, 10m standard cable and accessories including Lightening arrester)		
GST-TAXES @5% on 70% of Cost	37,100	
GST-TAXES @13% on 30% of Cost	57,240	
TOTAL COST OF PLANT + TAXES etc		11,54,340

COMPONENTS FOR EACH UNIT

- Tata Power Solar Module: 20000 Wp (250wx80)
- Tata Power Solar Grid-tie Inverter: 20kva (three phase)
- AC Distribution box, Array Junction box,
- Cables, lightening arrester, Earthing,
- And other accessories

TERMS AND CONDITIONS*

1. Includes Plant, structures, civil ballast structure, installation, taxes, as stated above.
2. Separate extra bill for transport from Bangalore and unloading.
3. Excludes Extra Cable, separate feeder line cable, Bi-directional meter, discom charges, Civil costs and electrical costs.
4. The price is payable by draft/RTGS favouring "Srinivas Impex, Chennai". Or by RTGS to "Indian Overseas Bank, Ashok Nagar Branch, Chennai 600083, IFSC IOBA0000463, A/c No.046302000002439 of "SRINIVAS IMPEX, No.71/1B, Pallavan Nagar Main Road, Maduravoyal, Chennai 600095"
5. PAYMENT TERMS :
 - a. 90 % advance payment
 - b. 10% as payment of 10% on final execution and commissioning of the project.

With regards

Yours faithfully,

(K.Soupramanien)

Srinivas Impex, Chennai 16



[Handwritten signature]

[Handwritten signature]
PRINCIPAL
SADAKATHULLAH APPA COLLEGE
Rahmath Nagar, TIRUNELVELI - 627 011.